

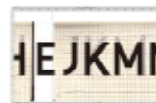
DIN Next Regular -> Typography (Etymology: typos—type, graphos—written) is the art and technique of arranging type, type design, and modifying type glyphs. Type glyphs are created and modified using a variety of illustration techniques. The arrangement of type involves the selection of typefaces, point size, line length, leading (line spacing), adjusting the spaces between groups of letters (tracking) and adjusting the space between pairs of letters (kerning). [1]

Typography is performed by typesetters, compositors, typographers, graphic designers, art directors, comic book artists, graffiti artists, and clerical workers. Until the Digital Age, typography was a specialized occupation. Digitization opened up typography to new generations of visual designers and lay users.

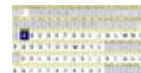
Load
to
Font
>>>



1. スケッチを書きます。



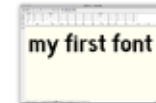
2. スキャンしてトレースします。
(ペンで描かれたものをトレースしてベクター化します。)



3. FontLab にはリソフケます。全然足りてません。



4. どんどん調整します。形も悪い切っけ変えます。



5. 字幅とスペースニングを調整します。縦幅のない横の始まります。



6. カーニングも調整したいところです。

A B C D E F G H I J K L M N O P Q

R S T U V W X Y Z

a b c d e f g h i j k l m n o p q r s t u v

w x y z ! ? () [] * @

1 2 3 4 5 6 7 8 9 0 _

Typography (Etymology: typos type, graphos written) is the art and technique of arranging type, type design, and modifying type glyphs. Type glyphs are created and modified using a variety of illustration techniques. The arrangement of type involves the selection of typefaces, point size, line length, leading (line spacing), adjusting the spaces between groups of letters (tracking) and adjusting the space between pairs of letters (kerning). [1]

"The Web" and "WWW" redirect here. For the 1947 Vincent Price film, see The Web (film). For other uses of "WWW", see WWW (disambiguation).

This article is about the system of interlinked hypertext documents. For the web browser, see WorldWideWeb.

The Web' s historic logo designed by Robert Cailliau The World Wide Web, abbreviated as WWW and W3 and commonly known as The Web, is a system of inter-